

LOETZ VASE POWOLNY WILMS, CA. 1916

€3.500,00

Vase Michael Powolny, Loetz Ausführung 170,
flower painting Franz Wilms, ca. 1916



This Loetzvase was designed by the famous viennese architect Michael Powolny. Powolny designed some objects for the art glass studio Loetz-Witwe Klostermühle and therefore influenced its style and the production of the art glass studio for several years.

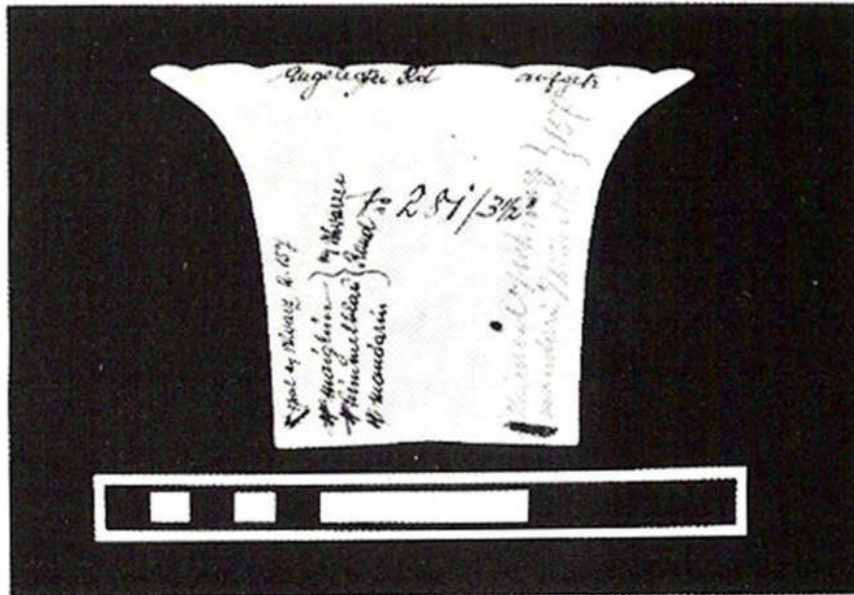
This vase is a classic example for his work with the art glass studio Loetz-Witwe Klostermühle. The smooth lines on the floral form and the perfectly small, handpainted flowers match amazingly with the style of Michael Powolny.

The vases were painted by Franz Wilms. This decor used to be painted on several designs but usually they were painted on designs by Michael Powolny.

XIK







281/3½" (M. Powolny)